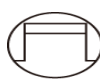


—产品特性/Feature—

- 200-265VAC (50/60Hz) 宽电压输入, 符合国际通用交流输入范围/ 200-265VAC (50/60Hz) Input, comply with alternating current input range all over the world;
- 隔离方案, DALI调光/ -
- 遵循DALI协议标准 IEC62386;/ Follow the DALI protocol of standard IEC62386
- 高效率、高功率因素, 稳定性好/ High efficiency, high PF, good steady;
- 短路保护, 过流保护, 过压保护, 过温保护/ short circuit/over load/over current/ over temperature protection;
- 自然风冷/ cooling by free air convection;
- 100%满载老化测试/ 100% full load burn-in test;
- 独立外置, Class I 恒流类型/ independent, Class I constant current type;
- 防护等级 IP67/ degree of protection IP67;
- 通过CE, TUV, SAA认证/ CE, TUV, SAA approved;
- 适用于面板灯/天花灯/筒灯等照明应用/ suitable for LED lighting, ceiling light, down light and panel light;
- 3年质保期/ 3 years warranty.



产品参数/Specification

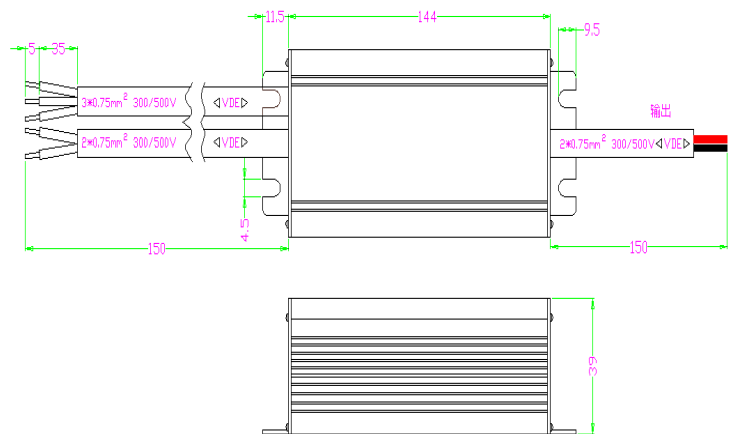
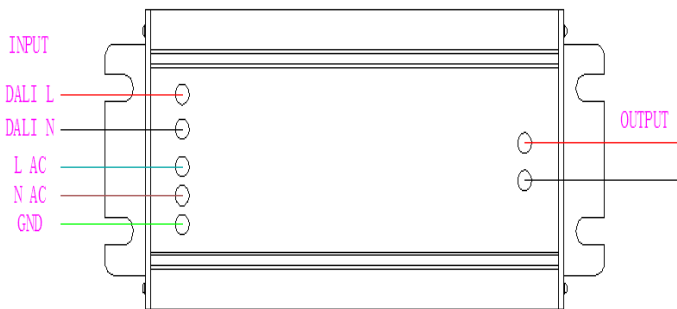
Model		LKAD0100D-D
输出 Output	电压/Rated voltage	30V-40V
	空载电压/No-load Voltage	50V
	DC电压范围/DC voltage range	30V-40V
	DC电流范围/DC current range	2500mA +-20mA
	电流精度/Current precision	(+/-)5%
	额定功率/Rated power	115W
	开机延时/Setup Time	≤0.5s/230VAC
输入 Input	AC电压范围/AC Voltage range	200-265VAC
	频率/Frequency	50/60hz
	谐波/THD	≤15%
	功率因数/Power factor	0.968/220VAC
使用环境 Environment Requirements	工作温度/湿度要求 Operating Temp./RH	-30~+50℃/20~95%
	储存温度, 湿度要求 Storage Temp./RH	-40~+80℃/10~95%
安全和电磁兼容	认证标识/Certificate	CE
	耐压/Withstand voltage	4000V
其他	尺寸/Size	L195*W62*H39mm
	重量/Net weight	

测试数据/Test data

输入电压 Input voltage (Vac)	输入功率 Input power (W)	输入电流 Input current (mA)	功率因数 PF	输出电压 Output voltage (Vdc)	输出电流 Output current (mA)	输出功率 Output Power (W)	转换效率 Efficiency (%)
220	87.23	416.49	0.952	30.00	2557	76.71	88%
	102.50	484.31	0.962	36.00	2535	91.26	89%
	113.30	532.02	0.968	40.00	2512	100.48	89%
265	85.66	349.08	0.926	30.00	2500	75.00	88%
	101.70	407.40	0.942	36.00	2500	90.00	88%
	112.50	446.87	0.950	40.00	2500	100.00	89%

产品接线示意图/ Product Connection Diagram

安装尺寸图/Install Size Diagram

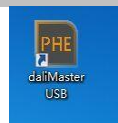


接
220VAC

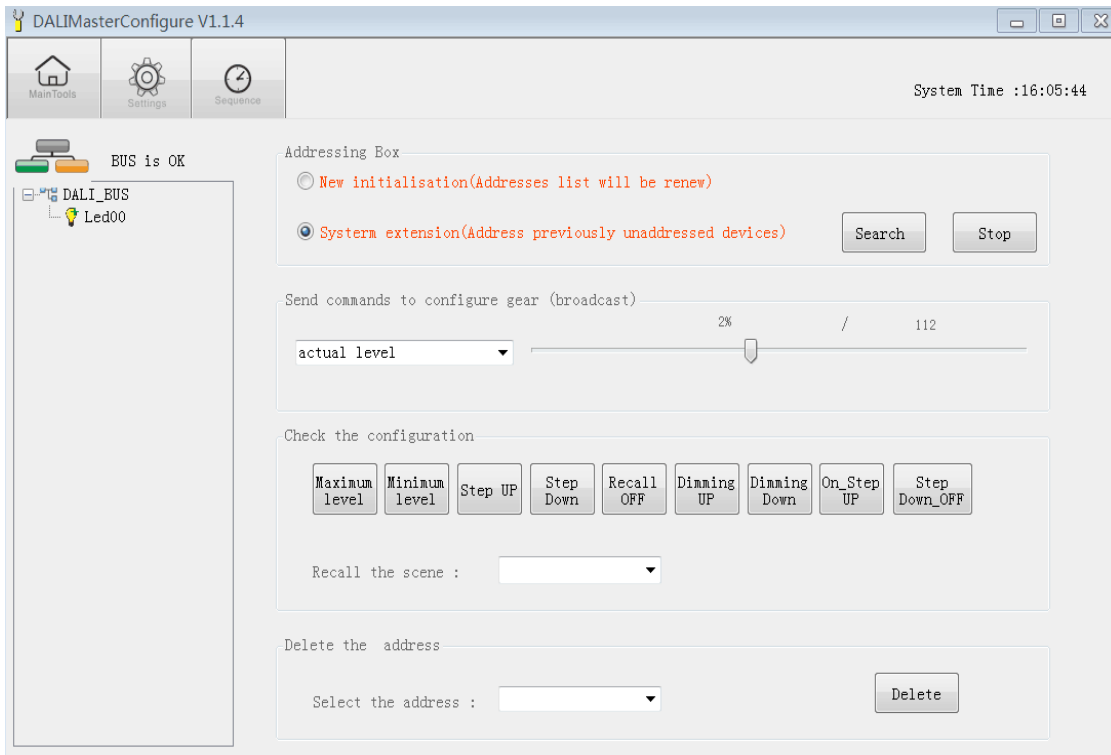
接
电脑

产品操作方法

接线完成后，在电脑上装此软件



，运行后通过软件控制开、关、电流。以下为操作者



备注/Note:

1. 所有没提及到的参数都是在230V输入，额定负载和在周围温度为25℃的情况下测试的；
All parameters NOT specially mentioned are measured at 230VAC input, rated load and 25 of ambient temperature;
2. 本驱动电源是作为一个部件与最终的设备结合进行操作的。因为EMC的性能在电源完全安装后会受到影响，因此最终设备制造商在完成安装后必须重新获取EMC指示认定。
The LED driver is considered as a component that will be operated in combination with final equipment. Since EMC performance will be affected by the complete installation, the final equipment manufacturers must re-qualify EMC Directive on the complete installation again.
3. 可以直接与LEDs连接，但不适宜与额外的驱动电源使用；
Direct connecting to LEDs is suggested, but is not suitable for using additional drivers.
4. 为了满足在灯具安装中最后的ErP校准要求，本驱动电源只能在一个不是永久地连接在交流干线的开关后面使用。
To fulfill requirements of the latest ErP regulation for lighting fixtures, this LED power supply can only be used behind a switch without permanently connect to the mains.

东莞市领冠半导体照明有限公司
Dongguan Linkuan Semiconductor Lighting Co.,Ltd

地址：广东省东莞市万江区大莲塘工业区3号
Address: NO.3 Building, Daliantang Industrial Park,
Wanjiang District, Dongguan, Guangdong, China
Tel:+86-769-23129651 Fax:+86-23129652