

# DALI Dimmable LED Driver—LKAD068D

## —产品特性/Feature—

LKAD068D是一款可以提供 700/900/1200/1500mA 4档电流的LED驱动器。输出电流可以通过 DIP 拨码开关简易设置，可以通过外加 DALI 主控实现平滑的调光效果。/ Model LKAD068D is a LED driver with 700/900//1200/1500mA 4 shifts output current. Output current easy to setup by a DIP switch. It can perform smooth dimming effect through connecting with a DALI main controller.

- 单通道恒流输出，4级电流可通过拨码选择；/ Single channel constant current output, 4 shifts can be changed by DIP switch.
- 200-240VAC (50/60Hz)输入 / 200-240VAC (50/60Hz) Input;
- 遵循DALI协议标准 IEC62386；/ Follow the DALI protocol of standard IEC62386
- 高效率、高功率因素，稳定性好 / Hight efficiency, hight PF, good steady;
- 短路保护，过流保护 / Short circuit/over current protection;
- 100%满载老化测试 / 100% full load burn-in test;
- 独立外置，Class II 恒流类型 / independent, Class II constant current type;
- 防护等级 IP20 / degree of protection IP20;
- 适用于面板灯/天花灯/筒灯等照明应用 / suitable for LED lighting, ceiling light, down light and panel light;
- 3年质保期 / 3 years warranty.



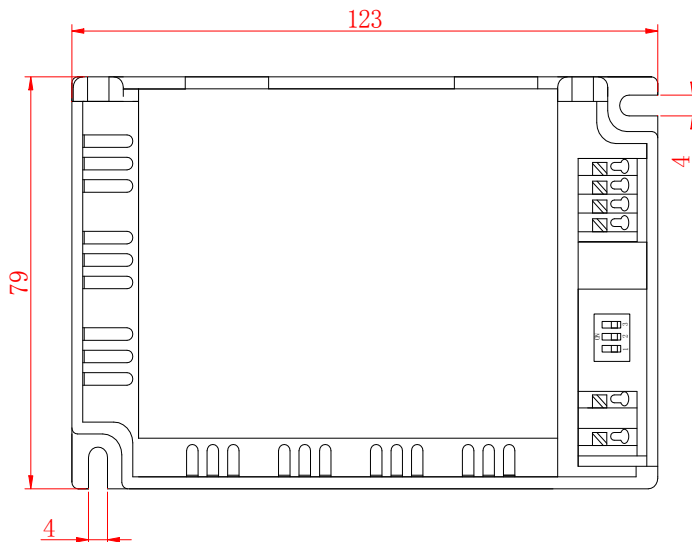
## 产品参数/Specification

Model	LKAD068D		
输入 Input	AC电压范围/AC Voltage range	200-240V	200-240V
	频率/Frequency	50/60hz	50/60hz
	谐波/THD	≤45%	≤15%
	功率因数/Power factor	0.91/230VAC	0.94/230VAC
输出 Output	额定电压/Rated voltage	40V	40V
	空载电压/No-load Voltage	50V	50V
	DC电压范围/DC voltage range	30-40V	30-40V
	DC电流范围/DC current range	1440-1550mA	880-910mA
	电流精度/Current precision	±3%	±3%
	额定功率/Rated power	60W	36W
	开机延时/Setup Time	≤0.5s/230VAC	≤0.5s/230VAC
使用环境 Environment Requirements	工作温度/湿度要求 Operating Temp./RH	-30~+45℃/20~95%	
	储存温度, 湿度要求 Storage Temp./RH	-40~+80℃/10~95%	
安全和电磁兼容	认证编号/Certificate	----	
其他	尺寸/Size	L123*W79*H33mm	
	重量/Net weight		

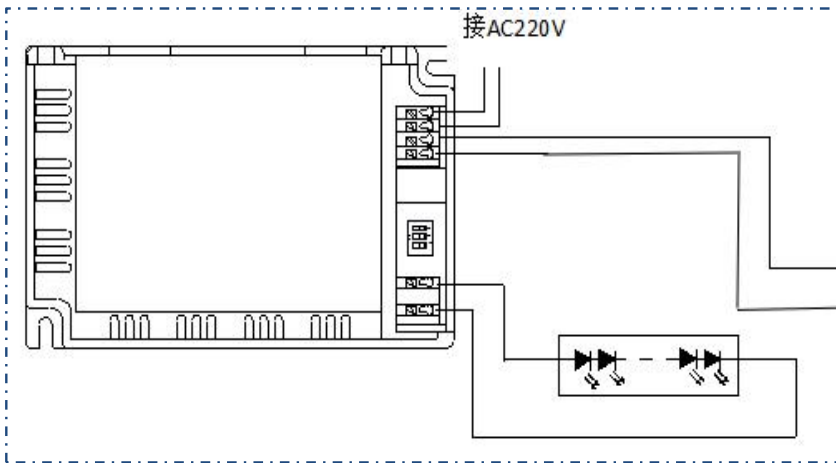
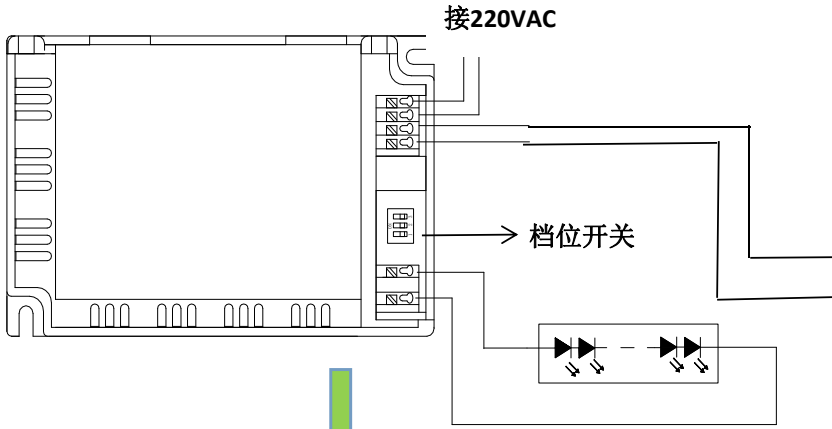
测试数据/Test data

输入电压 Input voltage ( Vac )	输入电流 Input current ( mA )	输入功率 Input power ( W )	功率因数 PF	输出电压 Output voltage ( Vdc )	输出电流 Output current ( mA )	输出功率 Output Power ( W )	转换效率 Efficiency ( % )	谐波系数 THD
180	385.00	65.10	0.926	40.00	1442	57.68	88.6%	34.3%
	360.00	59.80	0.896	36.00	1449	52.16	87.2%	41.3%
	305.00	50.20	0.968	30.00	1450	43.50	86.7%	32.0%
200	362.00	65.60	0.881	40.00	1449	57.96	88.4%	44.2%
	331.00	60.30	0.883	36.00	1455	52.38	86.9%	42.5%
	290.00	54.50	0.950	30.00	1503	45.09	82.7%	25.0%
220	310.00	65.10	0.916	40.00	1437	57.48	88.3%	33.7%
	282.00	59.80	0.938	36.00	1444	51.98	86.9%	38.3%
	246.00	52.80	0.943	30.00	1500	45.00	85.2%	23.8%
240	285.00	65.40	0.945	40.00	1447	57.88	88.5%	22.1%
	260.00	60.40	0.954	36.00	1458	52.49	86.9%	22.7%
	205.00	54.80	0.909	30.00	1540	46.20	84.3%	30.8%
180	228.00	40.20	0.977	40.00	885	35.40	88.1%	7.8%
	211.00	37.10	0.973	36.00	893	32.15	86.7%	6.7%
	184.00	32.10	0.962	30.00	898	26.94	83.9%	6.1%
200	206.00	40.10	0.965	40.00	882	35.28	88.0%	6.4%
	193.00	37.10	0.959	36.00	891	32.08	86.5%	6.6%
	170.00	32.30	0.942	30.00	899	26.97	83.5%	7.3%
220	190.00	40.20	0.947	40.00	882	35.28	87.8%	6.7%
	177.00	37.30	0.936	36.00	892	32.11	86.1%	7.8%
	158.00	32.50	0.914	30.00	902	27.06	83.3%	9.9%
240	150.00	40.20	0.881	40.00	901	36.04	89.7%	12.8%
	167.00	37.40	0.909	36.00	890	32.04	85.7%	10.5%

产品尺寸图/ Product Size Diagram



产品接线示意图/ Product Connection Diagram



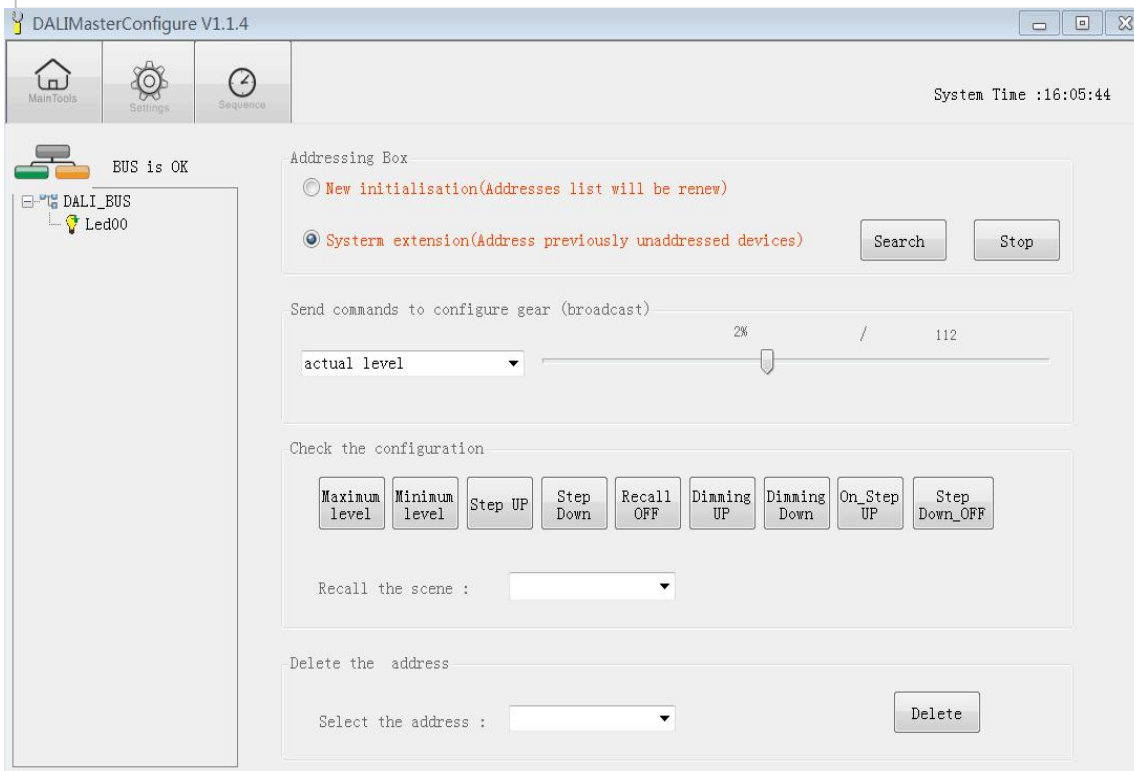
一个DALI调光器可以同时接多块模组，同时调光。

产品操作方法

接线完成后，在电脑上装此软



，运行后通过软件控制开、关、电流。以下为操作截图。



备注/Note:

1. 所有没提及到的参数都是在230V输入，额定负载和在周围温度为25°C的情况下测试的；  
All parameters NOT specially mentioned are measured at 230VAC input, rated load and 25 of ambient temperature;
2. 本驱动电源是作为一个部件与最终的设备结合进行操作的。因为EMC的性能在电源完全安装后会受到影响，因此最终设备制造商在完成安装后必须重新获取EMC指示认定。  
The LED driver is considered as a component that will be operated in combination with final equipment. Since EMC performance will be affected by the complete installation, the final equipment manufacturers must re-qualify EMC Directive on the complete installation again.
3. 可以直接与LEDs连接，但不适宜与额外的驱动电源使用；  
Direct connecting to LEDs is suggested, but is not suitable for using additional drivers.
4. 为了满足在灯具安装中最后的Erp校准要求，本驱动电源只能在一个不是永久地连接在交流干线的开关后面使用。  
To fulfill requirements of the latest ErP regulation for lighting fixtures, this LED power supply can only be used behind a switch without permanently connect to the mains.

## 广东领冠智能科技有限公司

Guangdong Linkuan Smart Tech Co.,Ltd.

地 址：广东省东莞市万江区大莲塘工业区3号  
Address: NO.3 Building, Daliantang Industrial Park,  
Wanjiang District, Dongguan, Guangdong, China  
Tel:+86-769-23129651 Fax:+86-23129652