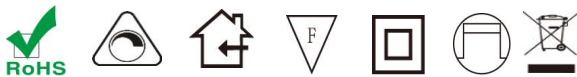


—产品特性/Feature—

- 200-240VAC (50/60Hz) 输入/200-240VAC (50/60Hz) Input
- 可以通过外加 DALI 主控实现平滑的调光效果./ It can perform smooth dimming effect through connecting with a DALI main controller. ■ 单通道恒流输出:/ Single channel constant current output;
- 遵循DALI协议标准 IEC62386;/ Follow the DALI protocol of standard IEC62386
- 高效率、高功率因素, 稳定性好 / Hight efficiency, high PF, good steady;
- 短路保护, 过流保护/ Short circuit/over current protection;
- 100%满载老化测试/ 100% full load burn-in test;
- 独立外置, Class II 恒流类型/ independent, Class II constant current type;
- 防护等级 IP20/ degree of protection IP20;
- 适用于面板灯/天花灯/筒灯等照明应用/ suitable for LED lighting, ceiling light, down light and panel light;
- 3年质保期/ 3 years warranty.



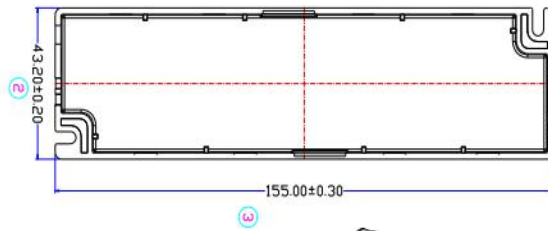
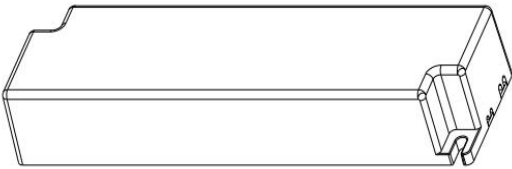
产品参数/Specification

Model	LKAD035D-D	
输入 Input	AC电压范围/AC Voltage range	200-240V
	频率/Frequency	50/60hz
	谐波/THD	
	功率因数/Power factor	0.95/230VAC
输出 Output	额定电压/Rated voltage	40V
	空载电压/No-load Voltage	45V
	DC电压范围/DC voltage range	20-40V
	DC电流范围/DC current range	950mA
	电流精度/Current precision	(+/-) 3%
	额定功率/Rated power	40W
	开机延时/Setup Time	≤0.5s/230VAC
使用环境 Environment Requirements	工作温度/湿度要求 Operating Temp./RH	-30~+45°C/20~95%
	储存温度, 湿度要求 Storage Temp./RH	-40~+80°C/10~95%
安全和电磁兼容	认证编号/Certificate	
其他	尺寸/Size	155*43*26mm
	重量/Net weight	

测试数据/Test data

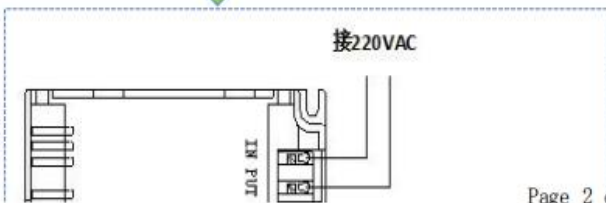
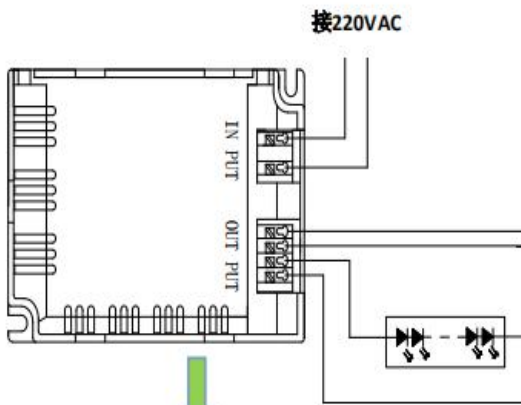
输入电压 Input voltage (Vac)	输入电流 Input current (mA)	输入功率 Input power (W)	功率因数 PF	输出电压 Output voltage (Vdc)	输出电流 Output current (mA)	输出功率 Output Power (W)	转换效率 Efficiency (%)	谐波系数 THD
200	117.2	22.57	0.956	20.00	946	18.92	83.8%	
	167.2	32.60	0.977	30.00	944	28.32	86.9%	
	220.1	42.53	0.982	40.00	939	37.56	88.3%	
240	102.1	22.63	0.925	20.00	943	18.86	83.3%	
	142.4	32.49	0.959	30.00	943	28.29	87.1%	
	183.7	42.51	0.970	40.00	938	37.52	88.3%	

产品尺寸图/ Product Size Diagram



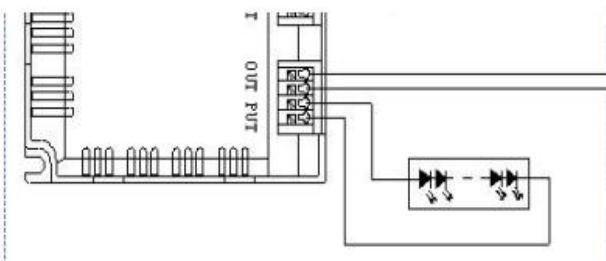
产品接线示意图/ Product Connection Diagram

产品接线示意图/ Product Connection Diagram




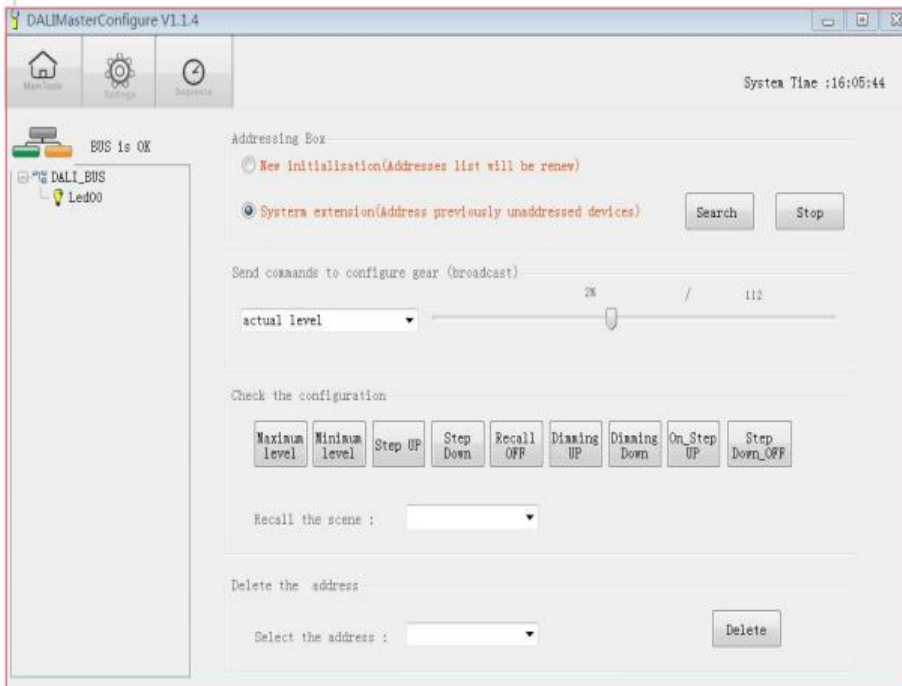
Page 2 of 4

一个DALI调光器可以同时接多块模组



一个DALI调光器可以同时接多块模组，同时调光。

接线完成后，在电脑上装此软  ，运行后通过软件控制开、关、电流。以下为操作截图。



备注/Note:

1. 所有没提及到的参数都是在230V输入，额定负载和在周围温度为25°C的情况下测试的；
All parameters NOT specially mentioned are measured at 120VAC input, rated load and 25 of ambient temperature;
2. 本驱动电源是作为一个部件与最终的设备结合进行操作的。因为EMC的性能在电源完全安装后会受到影响，因此最终设备制造商在完成安装后必须重新获取EMC指示认定。
The LED driver is considered as a component that will be operated in combination with final equipment. Since EMC performance will be affected by the complete installation, the final equipment manufacturers must re-qualify EMC Directive on the complete installation again.
3. 可以直接与LEDs连接，但不适宜与额外的驱动电源使用；
Direct connecting to LEDs is suggested, but is not suitable for using additional drivers.
4. 为了满足在灯具安装中最后的Erp校准要求，本驱动电源只能在一个不是永久地连接在交流干线的开关后面使用。
To fulfill requirements of the latest ErP regulation for lighting fixtures, this LED power supply can only be used behind a switch without permanently connect to the mains.

广东领冠智能科技有限公司

Guangdong Linkuan Smart Tech Co.,Ltd.

地 址：广东省东莞市万江区大莲塘工业区3号
Address: NO.3 Building, Daliantang Industrial Park,
Wanjiang District,Dongguan,Guangdong,China
Tel:+86-769-23129651 Fax:+86-23129652