

LKAD024V-C 24V 1000mA



—产品特性/Feature—

- 200-240VAC(50/60Hz) 电压输入, 符合国际通用交流输入范围/ 200-240VAC(50/60Hz) Input, comply with alternating current input range all over the world;
- 隔离方案, 0-10V调光/ Isolated, non-dimmable driver;
- 高效率、高功率因素, 稳定性好/ High efficiency, high PF, good steady;
- 短路保护, 过流保护, 过压保护, 过温保护/ short circuit/over load/over current/ over temperature protection;
- 自然风冷/ cooling by free air convection;
- 100%满载老化测试/ 100% full load burn-in test;
- 独立外置, Class II 恒流类型/ independent, Class II constant current type;
- 防护等级 IP20/ degree of protection IP20;
- 适用于面板灯/天花灯/筒灯等照明应用/ suitable for LED lighting, ceiling light, down light and panel light;
- 5年质保期/ 5 years warranty.



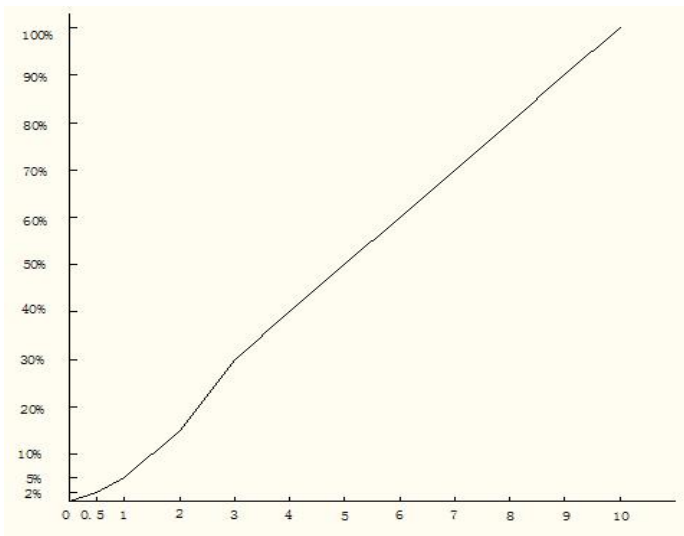
产品参数/Specification

Model	LKAD024V-C	
输出 Output	电压/Rated voltage	24V
	空载电压/No-load Voltage	24.2V
	DC电压范围/DC voltage range	24V
	DC电流范围/DC current range	1000mA
	电流精度/Current precision	(+/-)1%
	额定功率/Rated power	24W
	开机延时/Setup Time	
输入 Input	AC电压范围/AC Voltage range	200-240Vac
	频率/Frequency	50/60hz
	谐波/THD	≤15%
	功率因数/Power factor	0.56/230VAC
使用环境 Environment Requirements	工作温度/湿度要求 Operating Temp./RH	-30~+50℃/20~95%
	储存温度, 湿度要求 Storage Temp./RH	-40~+80℃/10~95%
安全和电磁兼容	认证编号/Certificate	IEC61347-2-13 EN6147-2-13
	安全规范/Safety standard	
	电磁兼容/EMC compliance	
	耐压/Withstand voltage	
其他	尺寸/Size	120*42.5*27.5mm
	重量/Net weight	

测试数据/Test data

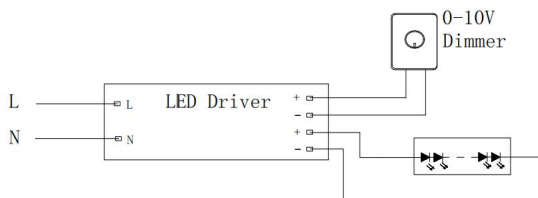
输入电压 Input voltage (Vac)	输入功率 Input power (W)	功率因数 PF	输出电压 Output voltage (Vdc)	输出电流 Output current (mA)	输出功率 Output Power (W)	0-10V电压
230	0.86	0.00	13.700	0.00	0	0
230	1.01	0.22	13.700	4.00	0.0548	0.5
230	1.16	0.25	13.750	8.00	0.11	1
230	1.40	0.32	13.800	13.00	0.1794	2
230	1.88	0.33	13.820	33.00	0.45606	3
230	3.09	0.40	14.360	83.00	1.19188	4
230	5.52	0.45	15.300	185.00	2.8305	5
230	9.75	0.48	16.740	343.00	5.74182	6
230	13.60	0.49	18.150	489.00	8.87535	7
230	18.15	0.51	19.810	660.00	13.0746	8
230	23.14	0.52	21.600	850.00	18.36	9
230	29.71	0.53	23.81	1093	26.02433	10

调光曲线图



产品接线示意图/ Product Connection Diagram

安装尺寸图/Install Size Diagram L:165mm



备注/Note:

- 所有没提及到的参数都是在230V输入，额定负载和在周围温度为25℃的情况下测试的；
All parameters NOT specially mentioned are measured at 230VAC input, rated load and 25 of ambient temperature;
- 本驱动电源是作为一个部件与最终的设备结合进行操作的。因为EMC的性能在电源完全安装后会受到影响，因此最终设备制造商在完成安装后必须重新获取EMC指示认定。
The LED driver is considered as a component that will be operated in combination with final equipment. Since EMC performance will be affected by the complete installation. The final equipment manufacturers must re-qualify EMC Directive

performance will be affected by the complete installation, the final equipment manufacturers must re-quality EMC Directive on the complete installation again.

3. 可以直接与LEDs连接，但不适宜与额外的驱动电源使用；

Direct connecting to LEDs is suggested, but is not suitable for using additional drivers.

4. 为了满足在灯具安装中最后的Erp校准要求，本驱动电源只能在一个不是永久地连接在交流干线的开关后面使用。

To fulfill requirements of the latest ErP regulation for lighting fixtures, this LED power supply can only be used behind a switch without permanently connect to the mains.

广东领冠智能科技有限公司

地 址: 广东省东莞市万江区大莲塘工业区3号

Address: NO.3 Building, Daliantang Industrial Park,

Wanjiang District,Dongguan,Guangdong,China

Tel:+86-769-23129651

Fax:+86-23129652